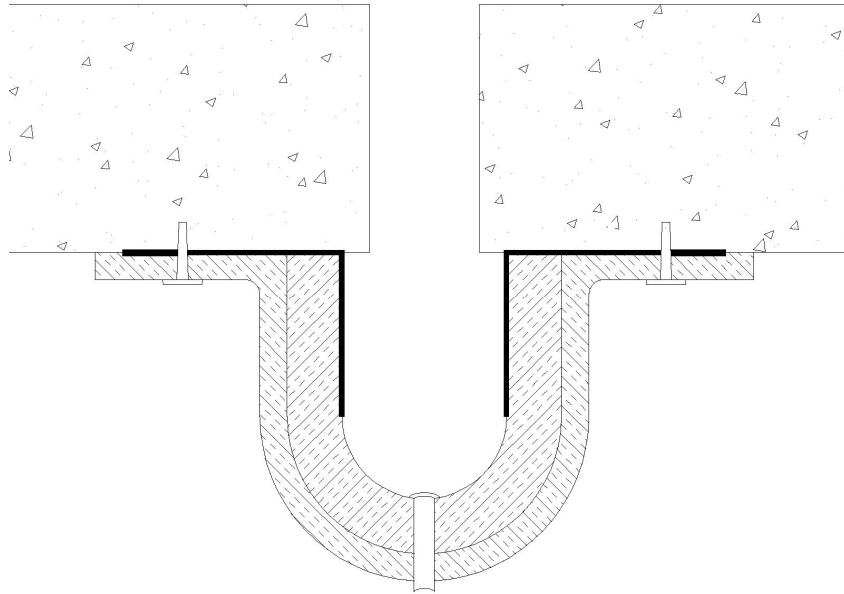


Water Guard Series

Listed By Warnock Hersey
US/CA

Installation instruction
Bottom Mount with optional drain tubes
Factory assembled



Bottom-mount **2" thru 32"** 2hr & 3hr fire rating
UL-2079 / ULC S-115 / ASTM E-1966-01/ ASTM E-1399

The following installation procedure is very important and must be fully understood prior to beginning any work. To ensure proper installation and performance of expansion joint system the following actions must be completed by the installing contractor. Failure to do so will affect product warranty and the fire barrier performance.

- Carefully read and understand installation procedure. Contact Fireline 520's Technical Service Department for product assistance.
- Inspect all shipments and materials for missing or damaged components and hardware.
- Inspect substrate or adjacent construction for acceptance before beginning work. Report unacceptable construction to the project manager for scheduled repair work.
- Review shop drawings for project specific detailed information.



General Notes

- Fire barriers must be installed in accordance with installation Instructions to maintain Intertek Rating.
- These instructions are intended for bottom mount fire barriers from 2" up to 32.5" for horizontal floor fire barrier systems that are anchored from the bottom.
- Fireline 520 highly recommends the use of eye protection, heavy duty work gloves, and long sleeve shirts during the entire installation process.
- While all Fireline 520 fire barriers come built and ready to install, some splicing and other cutting may be necessary. Refer to the splicing instructions for details.
- Joints and directional changes must be installed first.
- All Female ends need to be caulked using 3M CP25. The bead of caulk needs to be approximately 1" in and span the width of the material. Also note caulk bottom seams with 3-M CP 25

Tools

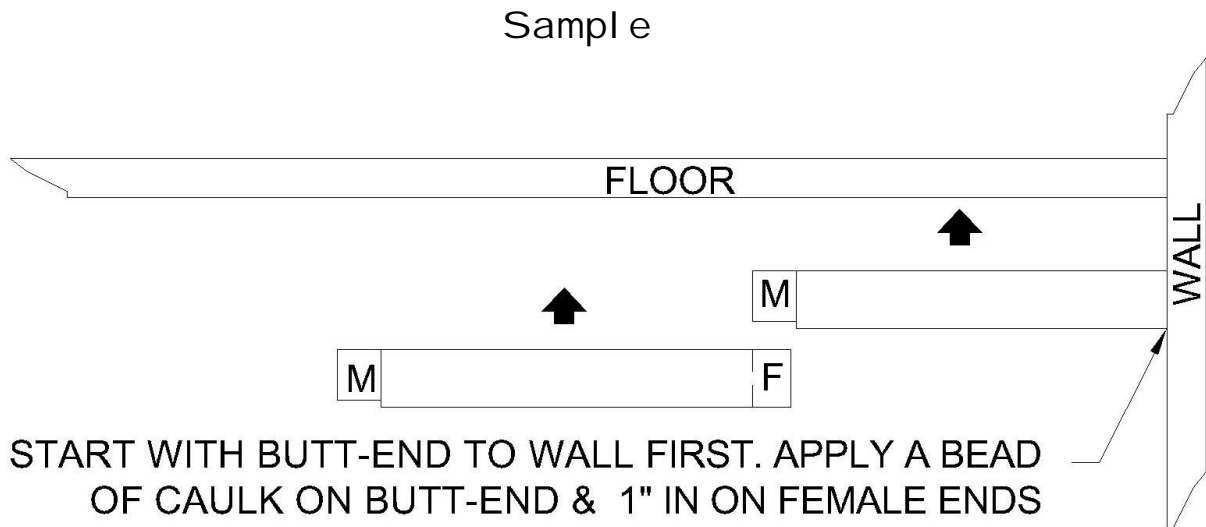
- Hit gun _____ shot # _____ or Electric Hammer Drill
- Fireline 520 for larger joints use fire line rolling cart
- Drill Bits
- Fireline 520 Lifting tool
- Tape Measure
- Caulk Gun
- Markers (for metal and concrete)
- Razor Knife
- Needle Nose Pliers

- Step 1:** Review Fireline 520 approved shop drawings for types and locations.
- Step 2:** start at the wall, start with fire blanket mark (1). This blanket has a straight end and a male end; at the straight you must apply 3-M CP25 fire caulk to the straight end of blanket. After you caulk the end of the blanket, make sure you push the blanket tight to the wall. When blanket is tight to the floor and wall, anchor blanket with Hil ti shot 12" on center. If needed, re-caulk bottom seam at wall with CP25 fire caulk.

Fireline 520 blankets have a 12" overlap on each end. One end is a male, while the other end is a female. Start at the female end of any directional changes as they should already be installed. Put a bead of caulk approximately 1" in from the end (Female end) also apply caulk to bottom seam as stated in the general notes.

- Step 3:** Anchor fire barrier from the bottom using Hil ti DX 460 gun and Hil ti #27 PIN a maximum distance of 12" apart.

Please note: anyone using a Hil ti gun must be trained by Hil ti before being used! All training is the responsibility of the Contractors





Innovative Products that Raise Industry Standards

Storage and Handling

It is the responsibility of the Contractor to:

- 1) Keep this product in a horizontal position and store in a clean, dry area. Inspect all fire barriers for damage.
- 2) Notify Fireline 520® as soon as possible regarding any damaged product due to shipping & handling, etc.

All fire barriers are inspected by Fireline 520® prior to shipment.

Date shipped _____

Inspected by _____

Estimated ship Date _____

Date Received _____

- We assume that you have ordered material to field-measured joint sizes or verified, application-specific requirements.
- Our materials will be custom-made to the above specified dimensions. As such this material is NON-RETURNABLE.
- Invoice due next 30 days. Invoice is subject to monthly late payment charge of 2% per month which is an annual percentage rate of 24% or such lesser amount as permitted by law on balance past due.
- Claims for missing or damaged goods must be made within 48 hours of receipt of goods.
- Goods may not be returned
- The material supplied against this order is subject to Fireline 520® standard 1 year limited warranty against material defect and workmanship therein

IN LIEU OF ALL OTHER WRITTEN OR ORAL EXPRESS OR IMPLIED WARRANTIES INCLUDING ANY WARRANTIES OF MERCHANTABILITY OR FITNESS FOR PURPOSE. Fireline 520® SHALL NOT BE LIABLE FOR AND EXPRESSLY DISCLAIMS ANY LIABILITY FOR ANY DAMAGE INCLUDING INCIDENTAL, CONSEQUENTIAL OR OTHER DAMAGES WHETHER IN CONTRACT OR IN TORT, INCLUDING NEGLIGENCE AND STRICT LIABILITY.